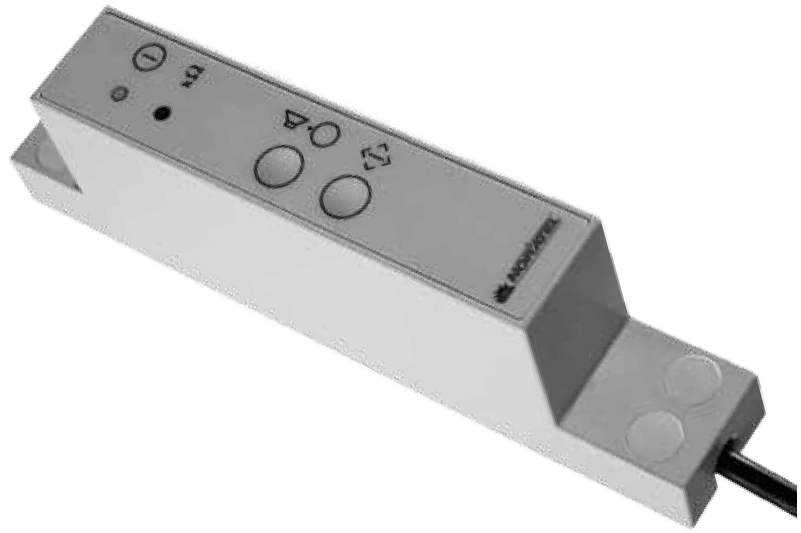


ELG  
ELG<sub>s</sub>  
ELG<sub>T</sub>

Earth Leakage Guard



The earth leakage guards of the ELG-series controls the dielectric resistance between the medical supply circuit and the earth potential.

The typically arranged protective measures against insulation fault on the building power supply (such as ground fault circuit breaker) may not principally identify possible insulation defects on the output side due to the galvanic insulation through the IMED isolating transformer. This leads to a potential danger for the patients or the operating personnel.

The earth leakage guards of the ELG-series close this security gap reliably by clearly warning against insulation faults. For this, the leakage resistance is controlled for the undercut of a limit value. If this case occurs, the ELG warns optically as well as acoustically.

**Folgende Isolationswächtervarianten sind lieferbar:**

**ELG** This model is designed for the transformers of the IMED<sub>e</sub> series. It is connected directly to one of the IEC output sockets. This device can only be used at 230 V~.

**ELG<sub>s</sub>** This model is identical to the ELG but has an expanded input voltage range of 115 V~ until 230 V~ and so can be used not only for the IMED<sub>e</sub> but also for the IMED<sub>i</sub> series.

**ELG<sub>T</sub>** The earth leakage guard ELG<sub>T</sub> was exclusively designed for the use with the medical isolating transformers of the IMED<sub>e</sub> 3<sup>rd</sup> Edition and IMED<sub>i</sub> 3<sup>rd</sup> series. Besides the insulation control, known from ELG and ELG<sub>s</sub> models, this series also provides a temperature control of the transformer in use.

In the case of an overload of the isolating transformer, the operator get's an optical-acoustical alarm and so can prevent a system failu- re by cutting of dispensable consumer loads.

The ELG<sub>T</sub> is equipped with a special interface plug for the connec- tion and so can only be combined with devices of the IMED<sub>e</sub> 3<sup>rd</sup> and IMED<sub>i</sub> 3<sup>rd</sup> series.

**Technical data ELG / ELG<sub>s</sub> / ELG<sub>T</sub>**

Type	ELG	ELG <sub>s</sub>	ELG <sub>T</sub>
Art.-No.	9-059-000010	9-059-000063	9-059-000062
Operating voltage	230 V ~ 50/60 Hz	115-230 V ~ 50/60 Hz	
Functions	insulation fault		insulation fault, excess temperature
Display	Operation (LED green), insulation fault (LED yellow)		Operation (LED green), insulation fault (LED yellow), excess temperature (LED yellow)
Connections	IEC 320 connector		interface connector
Protection class	Class 1 / IP 40		
Dimensions (LxWxH) mm	192 x 32 x 56		
Conformity	EN 60601-1 / EN 60601-1-4 / EN 60601-1-8 / EN 60601-1-2 / EN 61557-8 / EN 61010-1 / Low voltage directive 2006/95/EG	EN 60601-1 / EN 60601-1-8 / EN 60601-1-2 / EN 61557-8 / EN 61010-1 / Low voltage directive 2006/95/EG	